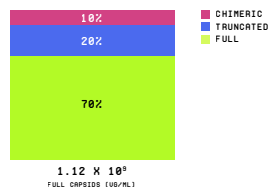


FORMsight<sup>AI</sup> SIMULATE

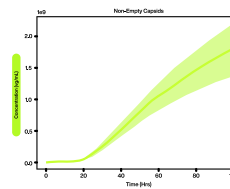
# Predict Bioreactor Output Before Spending Months and Millions

FORMsight<sup>AI</sup> SIMULATE enables cell and gene therapy developers to predict manufacturing output of a construct before spending the first dollar on bioreactor runs.

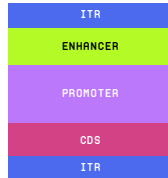
## Predict Capsid Fill Rates by Full, Truncated and Chimeric



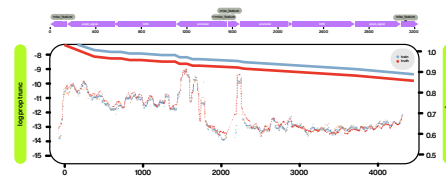
## Simulate Capsid Fill Progress Per Hour



## Understand Truncation Propensity Contribution by Region



## Predict Truncation Propensities and Hotspots by Structure Type



## Proven AI-powered benefits of FORMsight<sup>AI</sup> SIMULATE:

- Reduce costs by avoiding expensive bioreactor runs of suboptimal constructs
- Save time by reducing the number of test manufacturing cycles for a therapy candidate
- Enhance safety by identifying propensities for empty capsids and other impurities

Get Simulation Results in **Less Than 48 Hours**

## Required Input Data

- Plasmid Sequences and Annotations
- Plasmid Concentration/Volume Details
- Bioreactor Details
- Advanced Bioreactor Details (optional)

Ready to accelerate your cell and gene therapy development?

Connect with our team today learn how Form Bio can help you go further and faster.

Learn more

FORMBIO.COM